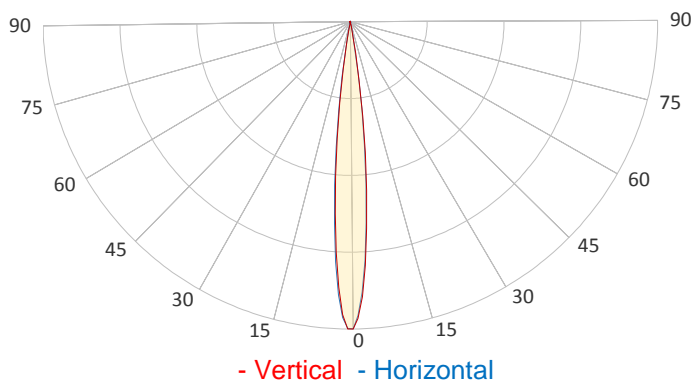
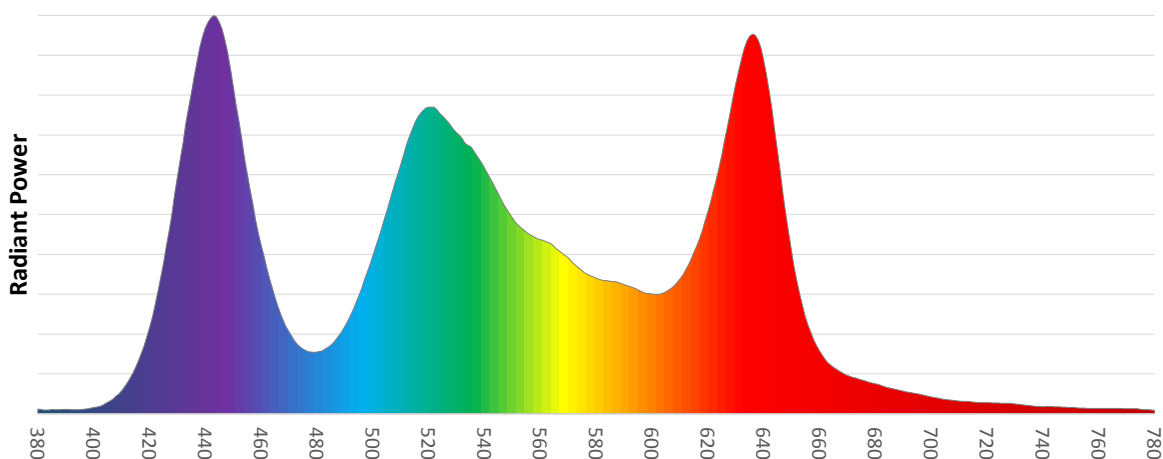


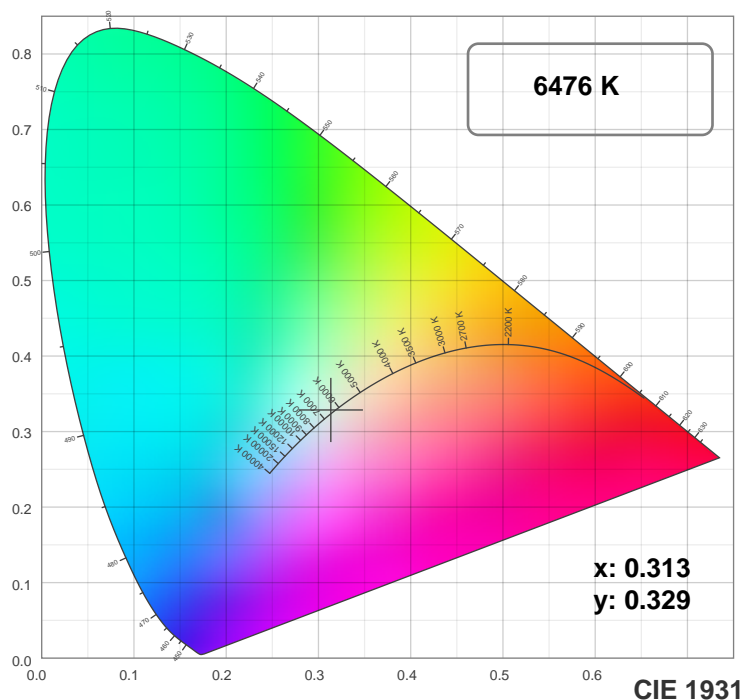
**General Specifications:****Total Fixture Output:** 6 klm**Light Engine Output:** 15 klm**Efficacy:** 14 Lumen/Watt**Lens Option:** N/A**Zoomrange:** 12-36°**CRI:** 80+**CQS:** 85+**TM-30 Rf:** 80+**TM-30 Rg:** 105+**TLCI:** 80+**Color Temperature:** 6500 K

## Measurement

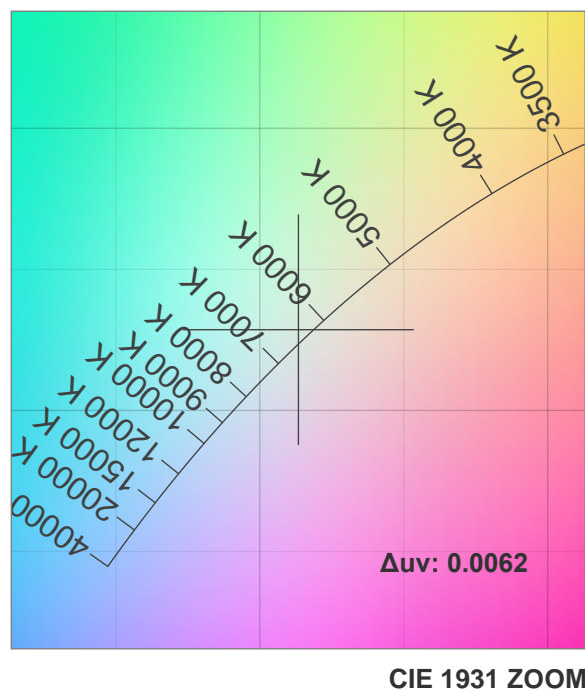
**Catalog Number:** 90250025HU**Measured Output:** 5890 lm**Measured Peak:** 115306 cd**Consumed Power:** 430 W**Efficacy:** 13.7 Lumen/Watt**Beam Angle (50%):** 11.4°**Field Angle (10%):** 18.7°**Cutoff Angle (3%):** 21.4°**Measurement Condition:****Ambient Temperature:** 25 +/- 5C**AC Supply:** 230V/50Hz

Spectral distribution

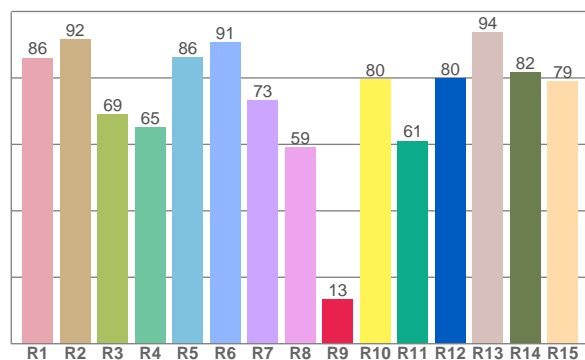
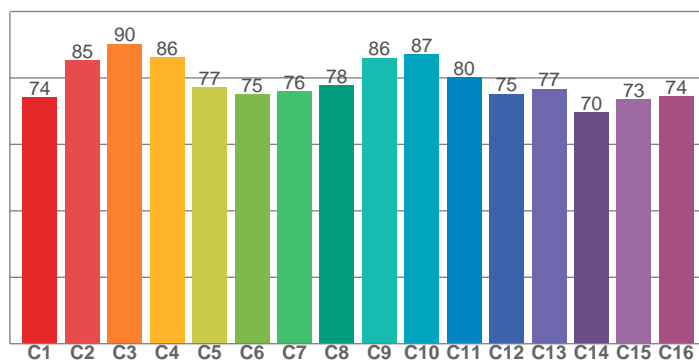




TM30: 79.7



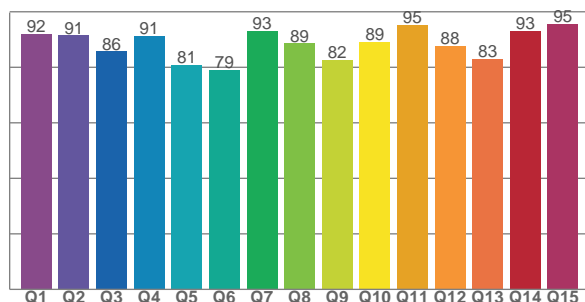
CRI: 77.6 (R1-R8)



### Color Parameters

| Color Temperature | Color Rendering Index | Red Component | Color Fidelity | Color Gamut |
|-------------------|-----------------------|---------------|----------------|-------------|
| CCT               | CRI                   | CRI R9        | TM30 Rf        | TM30 Rg     |
| 6476 K            | 77.6                  | 13.3          | 79.7           | 113.9       |

CQS: 87.5



| Television Lighting Consistency Index | Color Quality Scale | Color Coordinate CIE 1931 | Color Coordinate CIE 1931 | Color Coordinate CIE 1964 | Color Coordinate CIE 1964 | Color Diviation from Black Body |
|---------------------------------------|---------------------|---------------------------|---------------------------|---------------------------|---------------------------|---------------------------------|
| TLCI                                  | CQS                 | x                         | y                         | u                         | v                         | Δuv                             |
| 80+                                   | 87.5                | 0.313                     | 0.329                     | 0.198                     | 0.312                     | 0.0062                          |

# TM30

## MAC Allure Wash PC – Medium

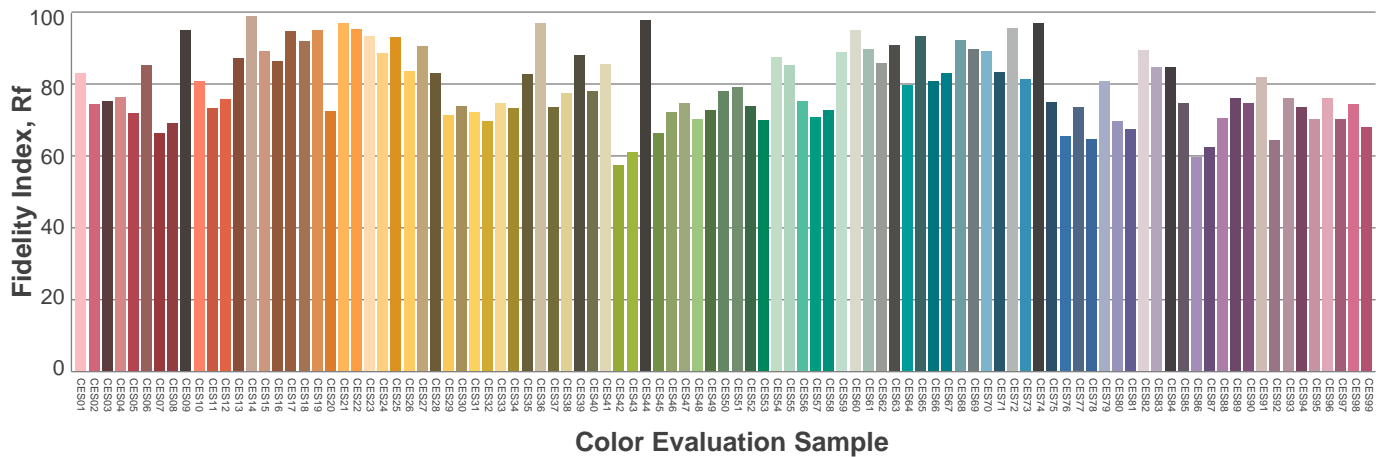
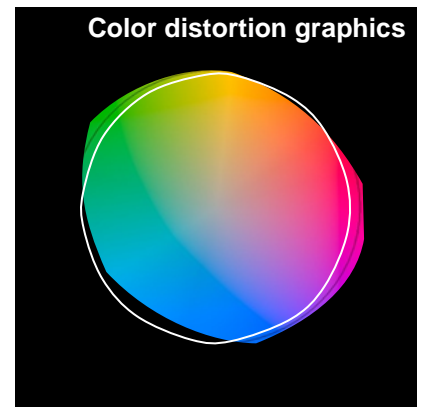
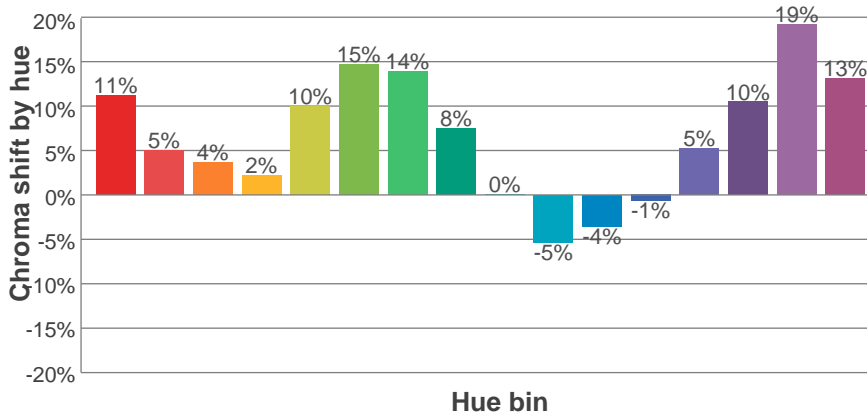
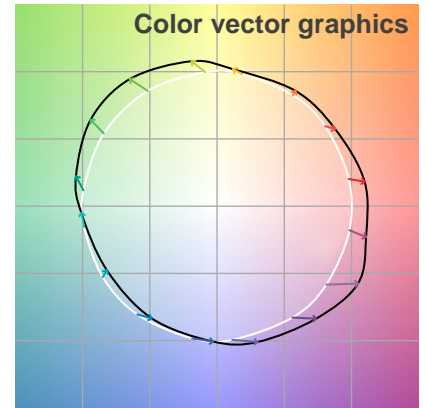
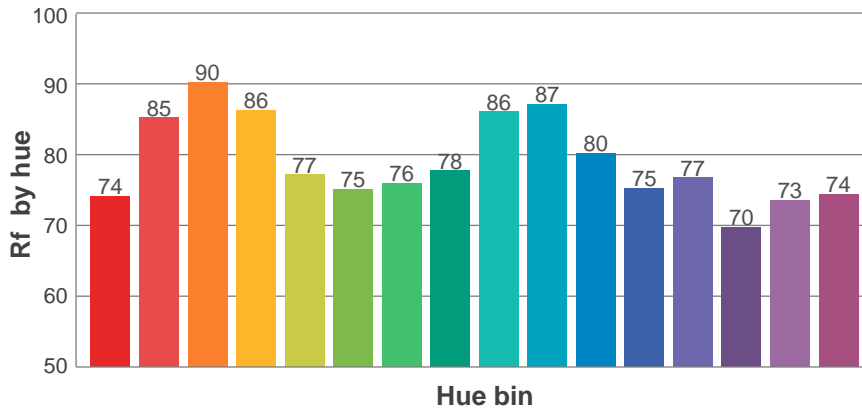
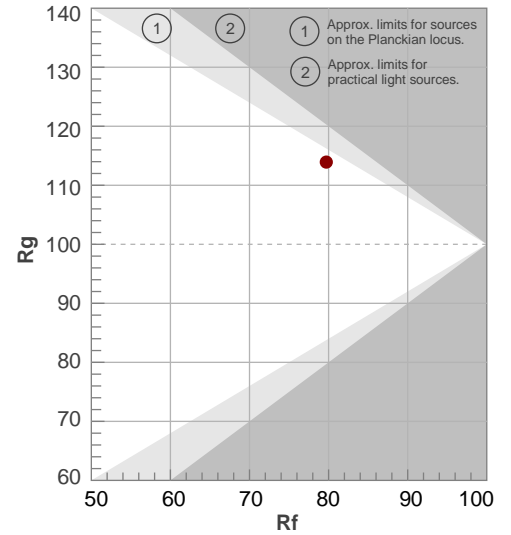
**Rf 79.7**

Fidelity index Rf

**Rg 113.9**

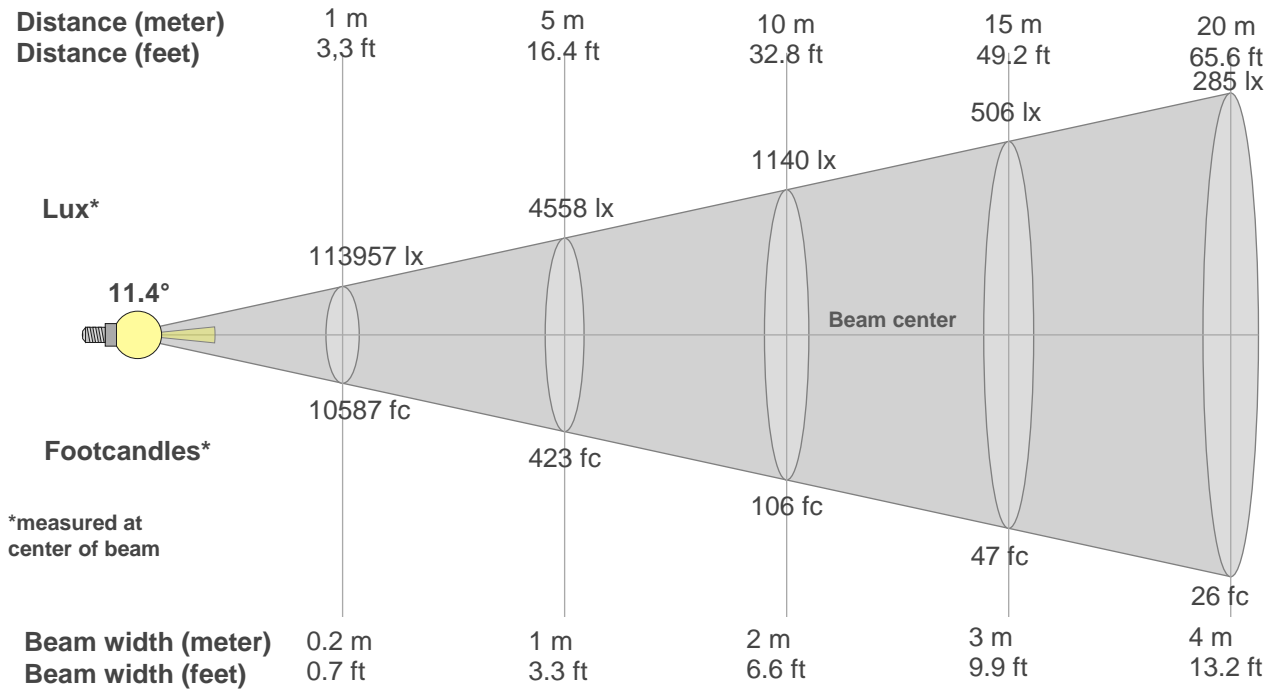
Gamut index Rg

| Hue Bin | R <sub>f</sub> | Graphic shifts (%) |      |
|---------|----------------|--------------------|------|
|         |                | Chroma             | Hue  |
| 1       | 74             | 11%                | -4%  |
| 2       | 85             | 5%                 | -6%  |
| 3       | 90             | 4%                 | 0%   |
| 4       | 86             | 2%                 | 7%   |
| 5       | 77             | 10%                | 8%   |
| 6       | 75             | 15%                | 6%   |
| 7       | 76             | 14%                | -3%  |
| 8       | 78             | 8%                 | -9%  |
| 9       | 86             | 0%                 | -11% |
| 10      | 87             | -5%                | -3%  |
| 11      | 80             | -4%                | 10%  |
| 12      | 75             | -1%                | 16%  |
| 13      | 77             | 5%                 | 18%  |
| 14      | 70             | 10%                | 14%  |
| 15      | 73             | 19%                | 14%  |
| 16      | 74             | 13%                | -3%  |



# Beam Details

## MAC Allure Wash PC – Medium



Beam width:

Beam luminous intensity formula:

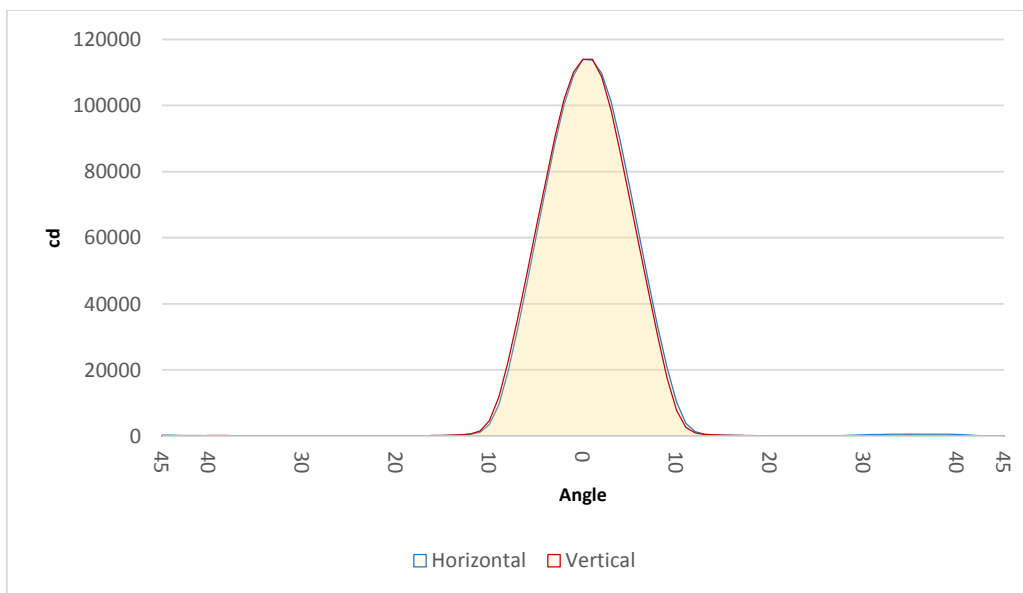
$$w = 0.2 * \text{distance}$$

$$\text{lux} = 113957 / (\text{distance}^2) \text{ (where distance is in meters)}$$

$$\text{fc} = 113957 / (\text{distance}^2) \text{ (where distance is in feet)}$$

### Beam illuminance from 1-20m

| 1m        | 2m       | 3m       | 4m      | 5m      | 6m      | 7m      | 8m      | 9m      | 10m     | 11m    | 12m    | 13m    | 14m    | 15m    | 16m    | 17m    | 18m    | 19m    | 20m    |
|-----------|----------|----------|---------|---------|---------|---------|---------|---------|---------|--------|--------|--------|--------|--------|--------|--------|--------|--------|--------|
| 3.3ft     | 6.6ft    | 9.8ft    | 13.1ft  | 16.4ft  | 19.7ft  | 23ft    | 26.2ft  | 29.5ft  | 32.8ft  | 36.1ft | 39.4ft | 42.7ft | 45.9ft | 49.2ft | 52.5ft | 55.8ft | 59.1ft | 62.3ft | 65.6ft |
| 113957lx  | 28489lx  | 12662lx  | 7122lx  | 4558lx  | 3165lx  | 2326lx  | 1781lx  | 1407lx  | 1140lx  | 942lx  | 791lx  | 674lx  | 581lx  | 506lx  | 445lx  | 394lx  | 352lx  | 316lx  | 285lx  |
| 10586.9fc | 2646.7fc | 1176.3fc | 661.7fc | 423.5fc | 294.1fc | 216.1fc | 165.4fc | 130.7fc | 105.9fc | 87.5fc | 73.5fc | 62.6fc | 54fc   | 47.1fc | 41.4fc | 36.6fc | 32.7fc | 29.3fc | 26.5fc |



| Beam angle 50% | Field angle 10% | Cutoff angle 3% |
|----------------|-----------------|-----------------|
| 11.4°          | 18.7°           | 21.4°           |